

HORSES

SECTION B (2) – HARNESS

Sponsored by Foster Service Centre

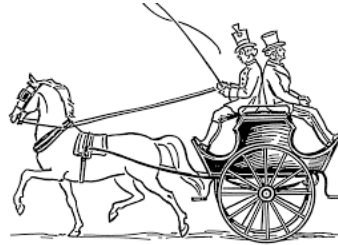
Start: during lunch break

Judge: Mr Michael Hopkins

Steward: Jennifer Neiuwenhuizen

Entry fee: \$4 pre-entry, \$8 late entry

Prize Money: 1st \$5, 2nd \$3



201. Two-wheel vehicle turnout under 14.2h

202. Two-wheel vehicle turnout 14.2h and over

203. Four-wheel vehicle turnout

204. Driven Shetland/Miniature Pony 10.2hh & under

205. Driven Pony 12.2 & under (exc. class 204 exhibits)

206. Driven Pony 12.2 - 14hh

207. Driven Horse over 14hh

208. Pleasure Pony or Horse

209. Open Driver (over 18yo)

210. Junior Driver (6-18yo – must be accompanied by an adult)

CHAMPION & RESERVE CHAMPION HARNESS EXHIBIT

(Classes 204 - 207 eligible)

Cornelius Neiuwenhuizen Memorial Trophy presented to the Champion Exhibit

Donated by Jennifer Neiuwenhuizen

Building Permits - Building Advice - Building Inspections - Pool Safety Inspections

-  Practical
-  Approachable
-  Service/Client Orientated
-  Fast turnaround
-  Consistent

APPROVED
BY  .COM.AU

1300 656 052 YOUR LOCAL BUILDING PERMIT SPECIALIST

SECTION C (3) – NATIVE PONIES

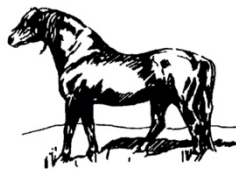
Start: 9am

Judge: Mr Michael Hopkins

Entry fee: \$4 pre-entry, \$8 late entry

Prize Money: 1st \$5, 2nd \$3

Unless a breed has its own breed specific class already, the eligible breeds for Small Native are Australian Pony, Welsh A&B, Shetland and Dartmoor. Eligible breeds for Large Native Fjord, Highland, Fell, Dales, Connemara, New Forest, Welsh C&D.



301. Led Shetland pony 8.2h & Under Male

302. Led Shetland pony 8.2h & Under Female

303. Led Shetland pony NE 10.2h Male

304. Led Shetland pony NE 10.2h Female

CHAMPION SHETLAND PONY

305. Led Highland Pony Male

306. Led Highland Pony Female

CHAMPION HIGHLAND PONY

307. Led Dartmoor Pony Male

308. Led Dartmoor Pony Female

CHAMPION DARTMOOR PONY

309. Led

Fjord Pony Male

310. Led Fjord Pony Female

CHAMPION FJORD PONY

311. Led Any Other Small Native Pony Male

312. Led Any Other Small Native Pony Male

CHAMPION ANY OTHER SMALL NATIVE PONY

313. Led Any Other Large Native Pony Male

314. Led Any Other Large Native Pony Male

CHAMPION ANY OTHER LARGE NATIVE PONY

SUPREME NATIVE PONY EXHIBIT

(All champions in Section C eligible)

Sash & prize **donated by Outlook Dartmoors**

315. Ridden Native Pony

Prize **donated by Outlook Dartmoors**

SECTION C (3) - TOPSY RING

Start: 1pm

Judge: Annalisa Moon; Steward: Jenny Doran

Entry fee: \$2 per class

Prize Money: Ribbons only

For genuine beginners only up to 12 years old. Riders may be led or assisted. Riders must not ride in any other ring. No plaiting.

316. Neatest and cleanest pony

317. Pony with the longest mane

318. Pony with the longest tail

319. Pony with the most spots

320. Hairiest pony

321. Pony most like its rider

322. Fancy dress – prizes for 1st to 3rd place **sponsored by Alison Lester Bookshop, Fish Creek**



ALISON LESTER


SECTION D (4) – RING 1 OPEN

Start: 9:00am

Judge: Peta Watson

Entry fee: \$4 pre-entry, \$8 late entry

Prize Money: 1st \$5, 2nd \$3

Any horse judged a champion is ineligible to compete in the same class in Ring 2.

Exhibits to be shown as either show horse or show hunter on the day – not both

CLASS - LED

401. Led show Galloway over 14h NE 14.2h

402. Led show Galloway over 14.2h NE 15h

403. Led hunter Galloway over 14h NE 14.2h

404. Led hunter Galloway over 14.2h NE 15h

CHAMPION/RES CHAMPION LED GALLOWAY
(classes 401-404)

405. Led show OTT Thoroughbred 14.2h and over

406. Led hunter OTT Thoroughbred 14.2h and over

407. Led show hack 15h NE 16h

408. Led show hack 16h and over

409. Led hunter hack 15h NE 16h

410. Led hunter hack 16h and over

CHAMPION/RES CHAMPION LED HACK (classes 407-410)

CLASS – RIDDEN

411. OTT ridden show Thoroughbred 14.2h and over

412. OTT ridden hunter Thoroughbred 14.2h and over

Open to TBs 4 years and over that have officially trialed/raced and are registered with RISA. Horse must be entered in registered racing name. Visit www.vicagshows.com.au for full details. Sash and \$50 prizemoney to be sent out once qualification has been verified (prize pack collected at State Final).

BEST RIDDEN OFF THE TRACK EXHIBIT

\$30 prizemoney & rosette sponsored by Stony Creek Racing Club

413. HERO ridden Standardbred

Open to purebred freeze-branded SBs registered with HRV, raced or unraced. Sash and \$50 prizemoney to be sent out once qualification verified (prize pack collected at State Final).

414. Novice hack over 15h

415. Show hack over 15h NE 15.2h

416. Show hack over 15.2h NE 16h

417. Show hack over 16h NE 16.2h

418. Show hack 16.2h and over

CHAMPION/RES CHAMPION RIDDEN SHOW HACK (classes 415-418)

Stony Creek Racing Club



Sunday 10th March 2024

Ladbrokes

Stony Creek Cup

with Fashions on the Field

**live music, food trucks and
kids entertainment including
Funky Farm wildlife shows**

Reserved tables & umbrellas available

Enquiries and bookings:

(03) 5664 0099 stonycreek.com.au


BROWN|WIGG

Wiggies Pty Ltd ABN 14 102 911 937

Trading as BrownWigg

"RURAL SUPPLY SPECIALISTS"

110-116 Whitelaw St, Meeniyan P: (03) 5664 0265

419. Hunter hack over 15h NE 15.2h
420. Hunter hack over 15.2h NE 16h
421. Hunter hack over 16h NE 16.2h
422. Hunter hack 16.2h and over
**CHAMPION/RES CHAMPION RIDDEN
HUNTER HACK** (classes 419-422)

423. Rider 18 – 21years
424. Rider 22 – 29 years
425. Rider 30 years and over
CHAMPION/RES CHAMPION SENIOR RIDER
(classes 423-425)

426. Novice Galloway over 14h NE 15h
427. Show Galloway over 14h NE 14.2h
428. Show Galloway over 14.2h NE 15h
**CHAMPION/RES CHAMPION SHOW
GALLOWAY** (classes 426-428)

429. Hunter Galloway over 14h NE 14.2h
430. Hunter Galloway over 14.2h NE 15h
**CHAMPION/RES CHAMPION HUNTER
GALLOWAY** (classes 429-430)

431. Ridden Shetland NE 10.2h
432. Show pony NE 11.2h (Shetlands not eligible)
433. Show pony over 11.2h NE 12h
434. Show pony over 12h NE 12.2h
**CHAMPION/RES CHAMPION SMALL SHOW
PONY** (classes 431-434)

435. Hunter pony NE 11.2h
436. Hunter pony over 11.2h NE 12h
437. Hunter pony over 12h NE 12.2h
**CHAMPION/RES CHAMPION SMALL HUNTER
PONY** (classes 435-437)

438. Show pony over 12.2h NE 13h
439. Show pony over 13h NE 13.2h
440. Show pony over 13.2h NE 14h
**CHAMPION/RES CHAMPION LARGE SHOW
PONY** (classes 438-440)

441. Hunter pony over 12.2h NE 13h
442. Hunter pony over 13h NE 13.2h
443. Hunter pony over 13.2h NE 14h
**CHAMPION/RES CHAMPION LARGE HUNTER
PONY** (classes 441-443)

**SUPREME CHAMPIONS (SEE
CONCLUSION OF RING 2)**

*All to be judged from champions of both Ring 1 & 2
by both judges*

**FOODWORKS TOORA
SUPERMARKET**

Open

Mon-Sat 8am - 8pm

Sun 9am-7pm

Fresh produce

Friendly service

**66 STANLEY STREET,
TOORA VIC. 3962**

Ph: 03 5686 2392

**YOUR LOCAL TREATED PINE
WHOLESALE SUPPLIER**



**Treated
pine posts
& poles
Sleepers
Railings
Lattice
Decking**



**www.albertontimber.com.au
(03) 5183 2437
sales@albertontimber.com.au**

SECTION E (5) – RING 2 OPEN

Start: 9:00am

Judge: Lisa Dunn

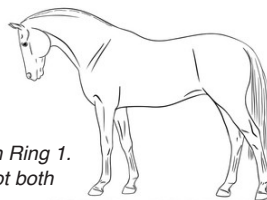
Steward: Janet Ousley, Deborah Kemp

Entry fee: \$4 pre-entry, \$8 late entry

Prize Money: 1st \$5, 2nd \$3

Any horse judged a champion is ineligible to compete in the same class in Ring 1.

Exhibits to be shown as either show horse or show hunter on the day – not both



CLASS - LED

501. Led Male Miniature Pony

502. Led Female Miniature Pony

CHAMPION/RES CHAMPION LED MINIATURE PONY (classes 501-502)

503. Led show pony 12h and under (Shetlands not eligible)

504. Led show pony over 12h NE 13h

505. Led show pony over 13h NE 14h

CHAMPION/RES CHAMPION LED SHOW PONY (classes 503-505)

506. Led hunter pony NE 12h and under (Shetlands not eligible)

507. Led hunter pony over 12h NE 13h

508. Led hunter pony over 13h NE 14h

CHAMPION/RES CHAMPION LED HUNTER PONY (classes 506-508)

CLASS – RIDDEN

509. VAS Good Hands Challenge – open to boys and girls aged 10 years and under 15 years on the day of the show. Judged solely on riding ability with particular attention to hands, seat and control of their mount. Competitors must ride in an ordinary snaffle bit, single jointed in the centre. Drop nosebands, whips and spurs are not allowed. Winner eligible for state final competition.

510. Junior Turnout – Rider 16 years and under, judged on mount conformation, soundness, manners and paces; equipment – saddle, bit etc; riding ability and; costume/presentation

Prize donated by Mrs M.A. Liley, Foster

511. Open rider under 8 years

512. Open rider 8 years and under 10 years

513. Open rider 10 years and under 12 years

CHAMPION/RES CHAMPION JUNIOR RIDER

(classes 511-513)

514. Open rider 12 years and under 14 years

515. Open rider 14 years and under 16 years

516. Open rider 16 years and under 18 years

CHAMPION/RES CHAMPION INTERMEDIATE

RIDER (classes 514-516)

517. Novice pony NE 14h

518. Ridden Shetland NE 10.2h

519. Show pony NE 11.2h (Shetlands not eligible)

520. Show pony over 11.2h NE 12h

521. Show pony over 12h NE 12.2h

CHAMP/RES CH SMALL SHOW PONY

(classes 517-521)

BULLDOZER HIRE

C. MAHOMED

**EARTHMOVING CONTRACTORS
HIRE OF D65E8 MACHINE**

Over 35 years
Experience

Experienced
Operators

Moderate
Rates



DAM SINKING – SMALL TO IRRIGATION SIZE, DAIRY
EFFLUENT PONDS, ACCESS TRACKS, LARGE TREES
REMOVED, HOUSE EXCAVATIONS
LAND DEVELOPMENT AND DISCING, ORNAMENTAL
LAKES WITH ISLANDS

**Phone Chris all hours
5682 1696 – 0447 758 778**

522. Hunter pony NE 11.2h
523. Hunter pony over 11.2h NE 12h
524. Hunter pony over 12h NE 12.2h
**CHAMPION/RES CHAMPION SMALL
HUNTER PONY** (classes 522-524)

525. Show pony over 12.2h NE 13h
526. Show pony over 13h NE 13.2h
527. Show pony over 13.2h NE 14h
**CHAMPION/RES CHAMPION LARGE
SHOW PONY** (classes 525-527)

528. Hunter pony over 12.2h NE 13h
529. Hunter pony over 13h NE 13.2h
530. Hunter pony over 13.2h NE 14h
**CHAMPION/RES CHAMPION LARGE
HUNTER PONY** (classes 528-530)

531. Show hack over 15h NE 15.2h
532. Show hack over 15.2h NE 16h
533. Show hack over 16h NE 16.2h
534. Show hack 16.2h and over
**CHAMPION/RES CHAMPION RIDDEN
SHOW HACK** (classes 531-534)

535. Hunter hack over 15h NE 15.2h
536. Hunter hack over 15.2h NE 16h
537. Hunter hack over 16h NE 16.2h
538. Hunter hack 16.2h and over
**CHAMPION/RES CHAMPION RIDDEN
HUNTER HACK** (classes 535-538)

539. Show Galloway over 14h NE 14.2h
540. Show Galloway over 14.2h NE 15h
**CHAMPION/RES CHAMPION SHOW
GALLOWAY** (classes 539-540)

541. Hunter Galloway over 14h NE 14.2h
542. Hunter Galloway over 14.2h NE 15h
**CHAMPION/RES CHAMPION HUNTER
GALLOWAY** (classes 541-542)

Williams Tracy & Associates
- Accountants -

**SPECIALISING IN PRIMARY PRODUCTION
ACCOUNTING AND BUSINESS SERVICES**

72 Main Street Ph: (03) 5682 2999
(PO Box 3) Fax: (03) 5682 2990
Foster 3960 Email: admin@apbsv.com.au

SOUTHERN
Stockfeeds

ABN 44 590 293 042

Suppliers of:

- Custom dairy, beef & sheep pellets formulated to your specific requirements
- Cereal grains
- Canola meal
- Pea pollard
- Almond hulls
- Quality hay

Call your friendly area manager for all prices,
including new season grain and canola meal.

1300 783 088

Gippsland

Neil Cope 0439 871 339

Jess May 0457 871 339

DON'T MISS OUR SHOWDAY RAFFLE!



SUPREME CHAMPIONS RING 1 & 2

All to be judged from champions of both Ring 1 & 2 by both judges

**SUPREME CHAMPION SHOW PONY –
Don McKnight Memorial Trophy**

Donated by Mr D and Mrs C McKnight, Meeniyan

SUPREME CHAMPION SHOW GALLOWAY

Prize donated by Foster Service Centre

**SUPREME CHAMPION SHOW HACK –
Betty Paragreen Memorial Trophy**

Prize donated by Mrs Glenda Paragreen, Foster

SUPREME CHAMPION HUNTER –

Robbie Allan Memorial Trophy *(Hunter ponies, hunter galloways and hunter hacks eligible)*

Prize donated by Mrs J Allan, Foster

STORR
TRANSPORT
LOCAL & INTERSTATE CARTAGE

YOUR LOCAL & INTERSTATE LIVESTOCK CARTAGE EXPERTS

CALL US TODAY!

03 5686 2265 125 LOWER TOORA ROAD VICTORIA 3862

FOSTER
FOODWORKS

7AM – 8PM MON – FRI, 7AM – 7PM SAT & SUN

SECTION F (6) – PONY CLUB

Start: approx. 1pm, at the conclusion of Showjumping

Host club: Corner Inlet Pony Club

Judge: TBA; Steward: Barbara Boag

Entry fee: \$3 pre-entry, \$6 late entry

Prize Money: Ribbons only

Events run under PCV rules. Riders to be in full competition uniform and correct gear. Riders must be able to produce card on request.



601. Smartest on Parade under 10 yrs

602. Smartest on Parade 10 – 12 years

603. Smartest on Parade 13 – 15 yrs

604. Smartest on Parade 16 yrs & over

605. Pony Club Rider under 10 yrs

606. Pony Club Rider 10 – 12 yrs

607. Pony Club Rider 13 – 15 yrs

608. Pony Club Rider 16 yrs & over

CHAMPION/RES CHAMPION PONY CLUB RIDER

609. Pony Club Mount under 12h

610. Pony Club Mount 12h & under 13.2h

611. Pony Club Mount 13.2h & under 15h

612. Pony Club Mount 15h & over

CHAMPION/RES CHAMPION PONY CLUB MOUNT

613. Pair of Pony Club Riders 12 yrs & under

614. Pair of Pony Club Riders over 12 yrs

615. CIPC Rider under 10 yrs

616. CIPC Rider 10 – 12 yrs

617. CIPC Rider 13 – 15 yrs

618. CIPC Rider 16 yrs and over

CHAMPION/RES CHAMPION CIPC RIDER

619. CIPC Mount under 13h

620. CIPC Mount 13h & under 14.2h

621. CIPC Mount over 14.2h


CHAMPION/RES CHAMPION CIPC MOUNT



SEJ
LIVESTOCK & REAL ESTATE
A NUTRIEN AG SOLUTIONS PARTNER

From livestock
to lifestyle property,
Clearing sale
to change of scenery,
First home
to dream home,
Contact us to get moving.

FOSTER
5682 2800
LEONGATHA
5662 4033



ROFFEY'S
ELECTRICAL
PTY. LTD.

Electrical contractors
21 Gibbs St, Foster 3960

williamroffey@bigpond.com

Shaun: 0418 508 770

SECTION G (8) – OFFICIAL HRC AV RING

Start: approx. 1pm, at the conclusion of Showjumping

Host club: Bennison Adult Riding Club

Judge: Erin Dunne

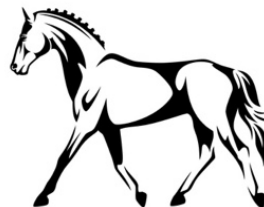
Card Steward: Michelle Boddy

Enquiries: Michelle Boddy 0402 252 157

Entry fee: \$4 pre-entry

Entries close: 16th February 2024. No late entries accepted

Prize Money: \$5 First, \$3 Second, Sashes to 6th for Smartest on Parade, Ribbons to 4th, Champion & Reserve ribbons



This Ring is to be conducted under HRC AV rules.

Enter online at www.fostershow.com or by submitting Foster Agricultural Show entry forms to

fostershow@gmail.com or PO Box 150, Foster VIC 3960

Competitors must hand in valid Membership/Performance cards and completed HRC AV

standard entry forms to the Card Secretary by 9.00am or earlier.

Riders to provide their own number. Medical armbands must be worn while jumping.

* Denotes classes eligible for points on cards.

801. *Smartest on Parade Level Advanced, 1 & 2

802. *Smartest on Parade Level 3

803. *Smartest on Parade Level 4

804. *Smartest on Parade Level 5

***CHAMPION & RES CHAMPION SMARTEST ON PARADE**

805. Led Exhibit under 15.2hh

806. Led Exhibit over 15.2hh

CHAMPION & RES CHAMPION LED HRC AV EXHIBIT

807. *Ridden Mount Level Advanced, 1 & 2

808. *Ridden Mount Level 3

809. *Ridden Mount Level 4

810. *Ridden Mount Level 5

***CHAMPION & RES CHAMPION RIDDEN MOUNT**

811. *HRC AV Rider Level Advanced and Level 1

812. *HRC AV Rider Level 2

813. *HRC AV Rider Level 3

814. *HRC AV Rider Level 4

815. *HRC AV Rider Level 5

***CHAMPION & RES CHAMPION RIDER**

816. *Mount most suitable for HRC AV Level Advanced and Level 1

817. *Mount most suitable for HRC AV Level 3

818. *Mount most suitable for HRC AV Level 3

819. *Mount most suitable for HRC AV Level 4

820. *Mount most suitable for HRC AV Level 5

***CHAMPION & RES CHAMPION MOUNT MOST SUITABLE**

CHAMPION & RESERVE CHAMPION HIGH POINT AWARD

Prize donated by Bennison Adult Riding Club Inc.

(Champion/Reserve classes not included in high point - in the eventuality of equal High

Point the winner of the countback will be on the placing in Rider Class, followed by

Ridden Mount and MMS)



PETER STOITSE TRANSPORT PTY LTD

Specialising in bulk liquid,
refrigerated & general transport,
intra & interstate, undercover
storage and forklift hire.

South Gippsland Hwy
Welshpool VIC
Phone: (03) 5688 1367
Fax: (03) 5688 1580
Email: management@stoitse.com.au

SECTION H (9) – SHOWJUMPING

Start: 8:30am

Judge: Mrs Bev Shandley

Stewards: Bruce Best, Neil Roussac, Jane Park, Gary Napthine, Ivan Ray

Course designer: Deb Collins

Entry fee: \$5 pre-entry, \$10 on day

Prize Money: Stated per class

Classes 901-904 all AM 7 rules - a competitor with a clear round rides the jump-off course, against the clock, before leaving the arena. The competitor has 45 seconds only to go through the starting flags after the Judge sounds the bell for the jump-off. The jump-off may include two (2) new obstacles in the course.

**Maximum 3 classes per horse*



901. Open Show Jumping Contest 65cm

Height: 1st round 65cm

Prizes: 1st \$35, 2nd \$20, 3rd \$10

Sponsored by Corner Inlet Pony Club

902. Open Show Jumping Contest 85cm

Height: 1st round 85cm

Prizes: 1st \$35, 2nd \$20, 3rd \$10

Sponsored by B&D Clavarino

903. Open Show Jumping Contest 1m

Height: 1st round 1m

Prizes: 1st \$40, 2nd \$20, 3rd \$10

Sponsored by Oakleys White Lawyers

904. Open Show Jumping Contest 1.05m

Height: 1st round 1.05m

Prizes: 1st \$60, 2nd \$40, 3rd \$20

Sponsored by Bruce and Jan Best



Showjumping at the 2023 Foster & District Show held at Bennison Rec Reserve

**OAKLEYS
WHITE**



2024 CAT SHOW

We're very excited to host some of Victoria's most beautiful cats at this year's Foster Show! On show in the Basketball Stadium for all to enjoy.



Generously supported by:

